

AFRICA REGIONAL CENTRES OF EXCELLENCE (ARCX) RELATED TO THE GREEN TRANSITION PROGRAMME

SCIENCE,
TECHNOLOGY &
INNOVATION (STI) FOR
SUSTAINABLE
DEVELOPMENT IN
AFRICA



Welcome to the Africa Regional Centres of Excellence (ArcX) programme, an innovative initiative dedicated to advancing sustainable development through Science, Technology, and Innovation (STI). The programme's cross-cutting methodology represents a pioneering and unparalleled approach.

The programme builds on knowledge and capacity development support provided to the ArcX through different sectoral approaches and existing programmes with the objective to rationalise, align and deepen the EU-Africa partnership and consolidate STI support under a single strategic and coherent intervention.

As a collaborative effort between African and European Centres of Excellence , the programme focuses on enhancing scientific and technical capacities to address the pressing challenges of the green transition.



PROGRAMME OVERVIEW

Launched in 2023 for a eight-year duration and in line with Africa and EU policies, strategies and high level dialogues the ArcX programme aims to :

Support inclusive green growth in Africa

Foster inclusive green growth through increased collaboration and cooperation in line with the AU-EU STI and green transition policy frameworks.

Strengthen EU-AU partnerships

Enhance the innovative capacities of African and European researchers and innovators by jointly developing a common Innovation Agenda.

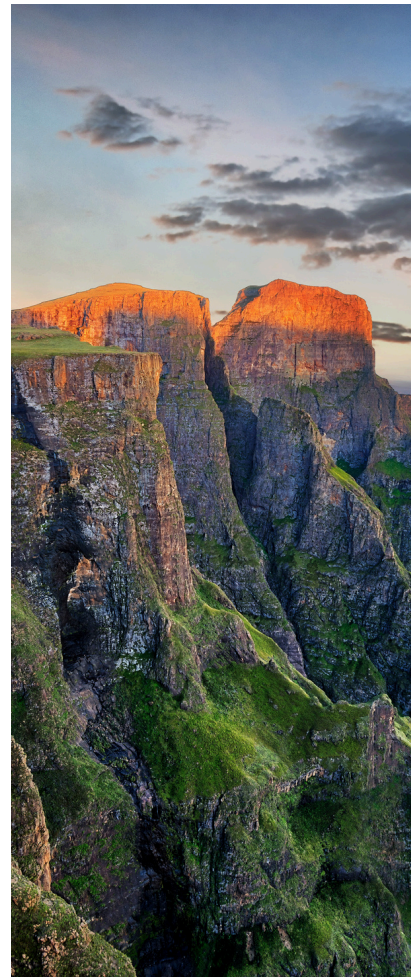
KEY OBJECTIVES

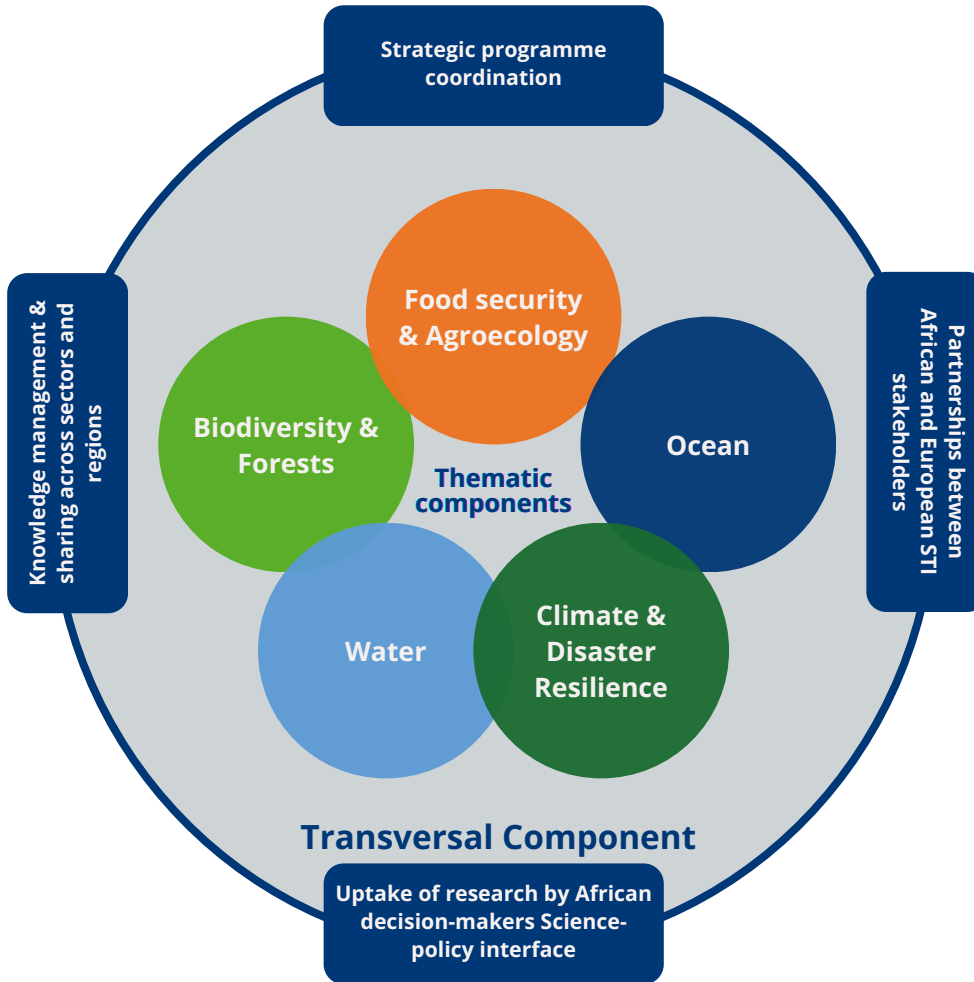
1. Improve cross-sectoral and cross-regional coordination as well as strategic steering of African Regional Centres of Excellence:

- Improve an STI – green transition framework of collaboration and knowledge management system across green transition areas.
- Enhance the knowledge management system across green transition areas

2. Increase STI capacities at sectoral level:

- Enhance data collection, knowledge generation, and support for practitioners, scientists, and policymakers.
- Increase contributions to a transformative quality research and scientific knowledge generation







ENHANCING STRONG CONNECTIONS BASED ON EXISTING COLLABORATIONS

Based on the long-lasting cooperation and collaboration between the two continents, the programme will strengthen the Africa-EU partnership on STI with a focus on enhancing scientific capacities in terms of human development and upgrading facilities; knowledge generation and management related to data and information production, collection, access and sharing; and support to practitioners, scientists and policy makers (in particular the science-policy interface)

TARGETED CENTRES


Research institutions should be renowned for their competence and capacity development initiatives, for providing scientific leadership and knowledge creation in dedicated sectors, be Africa-based and Africa-led and focus on thematic areas related to green transition.

COLLABORATION STRATEGIES

- Intermediary organisations: Acting as a bridge between specific ArcX sector stakeholders and EU offices they provide their scientific technical expertise as well as enhance coherence and coordination of targeted centres.
- Joint Research Centre (JRC) of the European Commission: Supporting specific sectors through their expertise and long-standing cooperation with Africa and through specific tools to promote synergies and complementarities among the targeted centres.
- Knowledge exchange: Developing interactive online tools integrated into the JRC Africa Knowledge Platform to promote data and information sharing among African and European STI stakeholders.
- Science-Policy Integration: Enhancing uptake of research by African decision-makers to drive science and evidence-based STI innovation and policy development.

OUTLOOKS

- *Continuous updates and coordination to ensure the sustainability of actions.*
- *Expanding the networks and enhancing the capacities of ArcX.*
- *Addressing institutional and functional differences to ensure coherence and sustainability.*

A close-up photograph of a male scientist with dark skin and curly hair, wearing a white lab coat, a white surgical mask, safety goggles, and blue nitrile gloves. He is holding a pink pipette tip and appears to be working with a sample. The background is a blurred laboratory setting with white cabinets and equipment.

For more information about the **Africa Regional Centres of Excellence** programme, visit our website or contact us.

Website: www.arcx.green

Email: info@arcx.green